

SPRING/SUMMER 2016

urborne®

MODERN  
VIBRANT  
FLAWLESS

UNIQUELY U

# urbane<sup>®</sup>✱

## urbane<sup>™</sup>✱ ultimate

A perfect blend of silk-like softness,  
subtle stretch and stylish durability.

**YOUR BEST U**

Page 4

## urbane<sup>™</sup>✱ performance

Soft, 4-way stretch fabric equipped  
with moisture-wicking technology.

**UNDENIABLY U**

Page 14

## urbane<sup>™</sup>✱ essentials

Vibrant, fashion-forward styles and  
colors meticulously constructed.

**UNIQUELY U**

Page 20

ultimate



# STYLES TO SUIT YOU

essentials

STYLE-CONSCIOUS,  
EMPOWERED HEALTH  
CARE PROFESSIONALS  
DON'T HAVE TO GIVE UP  
STYLE FOR COMFORT.  
YOU'LL LOVE OUR FIT,  
FLATTERING DETAILS,  
POCKETS AND SPECTRUM  
OF COLORS.

CELEBRATE YOUR  
INDIVIDUALITY AND FEEL  
**CONFIDENT AND STRONG**  
ALL DAY LONG.

**BE UNIQUELY U.**

performance



urbane<sup>™</sup>  
ultimate

# COMFORT AND STYLE

The perfect blend  
of silk-like softness,  
subtle stretch  
and stylish  
durability.

A

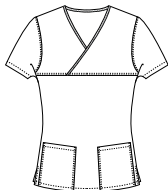
**A 9407**  
**"Mandi" Crossover Top**

The only Ultimate top in the classic Urbane crossover style with the remarkable softness and durability. Tailored crossover top with bound neckline. Two roomy patch pockets. Back darts for subtle shaping. Move with ease thanks to side slits at the hem.

54% rayon/44% polyester/2% spandex

Sizes: XS-3XL

Medium length: 26<sup>3</sup>/<sub>8</sub>"



**B 9576**  
**"Ella" Double V-Neck Tunic**

Feel as good as you look. Double V-neck with interwoven double banded sleeve cuff detail. Princess seams and two sets of back darts for tailored waistline shaping. Four inset double-angled pockets. Tagless for even greater comfort.

54% rayon/44% polyester/2% spandex

Sizes: XS-5XL

Medium length: 24<sup>5</sup>/<sub>8</sub>"



See color chart on page 12

B



**A 9306**  
**"Alexis" Comfort Elastic Waist Pant**

Looking professional has never been so comfy. Soft modern elasticized waist with hidden drawstring for customized fit. Sits comfortably at the natural waist. Relaxed through hips, seat and thigh. Two curved top stitched inset pockets. Flare leg with vents. Tagless for even greater comfort.

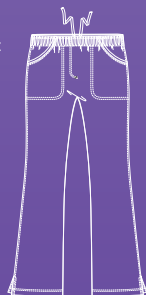
54% rayon/44% polyester/2% spandex

Sizes: XS-5XL [31½" inseam]

PXS-P3X [29" inseam]

TXS-TXL [33½" inseam]

White available in XS-3XL





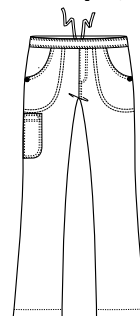


## B 9300 "Bailey" Cargo Pant

Move with comfort and confidence. Flare leg silhouette features flat front waistband with inside drawstring and back elastic. Sits comfortably at the natural waist. Relaxed through hip, seat and thigh. Front scoop pockets with stitched detail. Logo rivet at the side seam of the front pockets. Cargo pocket on the right.

54% rayon/44% polyester/2% spandex

Sizes: XS-5XL [31½" inseam]  
PXS-P3X [29" inseam]  
TXS-TXL [33½" inseam]

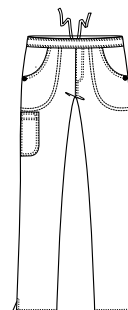


## C 9313 Tapered "Bailey" Pant

Just like the original "Bailey" pant, the tapered "Bailey" fits your shape. This pant is flat-out flattering with a natural waist and full drawstring along with a tapered leg and knee. Two front scoop pockets and a right side cargo pocket for extra storage.

54% rayon/44% polyester/2% spandex

Sizes: XS-3XL [30½" inseam]  
PXS-P3X [28" inseam]  
TXS-TXL [32½" inseam]



See color chart on pages 12-13



B



C

**B 9577**  
**"Sophie" Crossover Tunic**

The style you love in a softer, more flexible fabric. Crossover tunic with shaped waistline. Six pockets and an accessory loop add function to fashion. Tagless for even greater comfort.

54% rayon/44% polyester/2% spandex

Sizes: XS-5XL

Medium length: 26 $\frac{1}{8}$ "



**C 9034**  
**"Megan" Snap-Front Jacket**

Layer your look with this soft, feminine V-neck jacket. Banded sleeve-hem is accented with a nonfunctional snap tab. Two deep-angle pockets with nonfunctional snap tabs. Back darts and side slits for easy fit.

54% rayon/44% polyester/2% spandex

Sizes: XS-5XL

Medium length: 25 $\frac{7}{8}$ "





**A 9038**

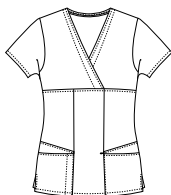
**"Ashley" Mock Wrap Top**

Wrap it up in style with our Urbane Ultimate mock-wrap top. An empire neckline extends into empire seam with front and back waist darts to accentuate your shape. Four top-entry pockets with bungee loop and an instrument pocket provide plenty of storage and easy access to everyday essentials. Side slits provide ease of movement and all-day comfort.

54% rayon/44% polyester/2% spandex

Sizes: XS-3XL

Medium length: 27<sup>3</sup>/<sub>8</sub>"



**A 9550**

**"Chloe" Sweetheart Neck Tunic**

This top has it all! Sweetheart-shaped neckline and two double pockets with flat binding detail. Front and back waist darts for shaping. Logo rivet at side seam of pockets. Accessory loop on left pocket.

54% rayon/44% polyester/2% spandex

Sizes: XS-5XL

Medium length: 26<sup>3</sup>/<sub>8</sub>"



A

**B 9871**

**"Aubrey" Front Button Jacket**

Throw some extra style into your rotation with our flattering "Aubrey" round neckline jacket. This jacket will keep you ready for anything with a six-button front closure and two deep top-load pockets, as well as a side pocket with instrument division. Gain added security with a 2"x2" rib knit cuff on the sleeve opening. Side slits keep you moving with ease.

54% rayon/44% polyester/2% spandex

Sizes: XS-3XL

Medium length 28<sup>7</sup>/<sub>8</sub>"



See color chart  
on page 12.



**C 9870**  
**"Mindi" Ultimate Jacket**

This original Urbane Ultimate crew-neck jacket features oversized snap ring placket with two side-entry pockets. Front and back princess seams provide subtle shaping. Novelty stitched-down cuff detail with snap accent. Move with ease thanks to side slits at the hem.

54% rayon/44% polyester/2% spandex

Sizes: XXS-3XL

Medium length: 27<sup>7</sup>/<sub>8</sub>"



While supplies last.

TOP COLORS  
& STYLES  
P2=UP TO P2X  
P3=UP TO P3X  
T=UP TO TXL

9407  
"Mandi"



XS-3XL  
26 7/8" LENGTH  
PG. 4

9550  
"Chloe"



XS-5XL  
26 7/8" LENGTH  
PG. 10

9576  
"Ella"



XS-5XL  
24 7/8" LENGTH  
PG. 5

9577  
"Sophie"



XS-5XL  
26 7/8" LENGTH  
PG. 7

9034  
"Megan"



XS-5XL  
25 7/8" LENGTH  
PG. 7

WSL

9870  
"Mindi"



XXS-3XL  
27 7/8" LENGTH  
PG. 11

9038  
"Ashley"



XS-3XL  
27 7/8" LENGTH  
PG. 8

9300  
"Bailey"



XS-5XL  
31 1/2" INSEAM  
PG. 9

African Violet PAVAH



P3, T, †

Aqua/Steel AOSTU



Black BKAH



P3, T

Black/Cherry Blossom BKPCU



Black/Primrose BKPRU



Black/True Red BKTRU



Blue Iris BIAH



P3, T

Caribbean CBAH



P3, T

Ceil BCAH



P3, T

Ceil/Navy BCBNU



Cotton Candy PCCAH



P3, T, †

Emerald GEAH



P3, T, †

Espresso BESAH



P3, T

Galaxy BGAH



Graphite GRAH



P3, T

Graphite/Papaya GROPU



Hunter GHAH



P3, T

JazzBerry JZAH



P3, T

New! Kelly GKAH



P3, T

Mint GMAH



Navy BNAH



P3, T

Navy/Ceil BNBCU



Papaya OPAH



P3, T, †

Peri BPEAH



P3, T

Pixie Pink PPAH



New! Poppy PPPAH



P3, T

Primrose PRMAH



P3, T

Primrose/Black PRBK



Royal BEAH



P3, T

Royal/Lime BELMU



Steel STAH



P3, T

Steel/Pearl Pink STPKU



Sweet Tart SWTAH



Teal BTAH



True Red TRAH



True Red/Black TRBKU



Turquoise GTUAH



Ultramarine BUMAH



P3, T, †

New! Spring 2 Waterfall BWAH



P3, T

White WWAH



P3, T

Wine RWAH

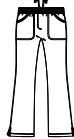


P3, T



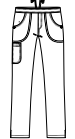
# CHART

9306  
"Alexis"



XS-3XL  
31 1/2" INSEAM  
PG. 6

9313  
"Skinny  
Bailey"



XS-3XL  
30 1/2" INSEAM  
PG. 9

9871  
"Aubrey"



XS-3XL  
28 1/2" LENGTH  
PG. 10

P3, T, †

P3, T

P3, T

P3, T

P3, T

P3, T

P3, T

P3, T

P3, T, †

P3, T, †

P3, T

P3, T

P3, T

P3, T

P3, T

P3, T

P3, T

P3, T, †

P3, T

P3, T

P3, T, †

P3, T

P3, T

P3, T

P3, T

P3, T

P3, T

P3, T

P3, T

P3, T

P3, T

P3, T

P3, T

P3, T

P3, T

P3, T, †

P3, T

P3, T

XS-3XL, P3, T

P3, T

P3, T



# ALL-DAY COOL

4-way stretch, an exceptionally soft feel and moisture-wicking technology.

## A 9014 "Propel" Surplice Top

Bound surplice features front princess seam styling. Back waist darts enhance shape. Tonal stitched sleeves. Top-entry bound, curved pockets plus an additional welt pocket with interior mesh lining and tonal stitching. Side slits at hem.

95% polyester/5% spandex

Sizes: XS-5XL

Medium length: 26<sup>5</sup>/<sub>8</sub>"



## B 9312 "Endurance" Cargo Pant

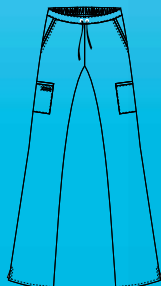
A yoga-inspired cargo pant that'll keep you feeling energized all day. Combination drawstring front and elastic-back waist. Sits comfortably at natural waist. Two back darts designed to fit curves while staying relaxed through hips and thighs. Slanted front pockets feature tonal stitching.

95% polyester/5% spandex

Sizes: XS-5XL [31<sup>1</sup>/<sub>2</sub>" inseam]

PXS-P2X [29" inseam]

TXS-TXL [33<sup>1</sup>/<sub>2</sub>" inseam]



# FRESH WORK STYLE



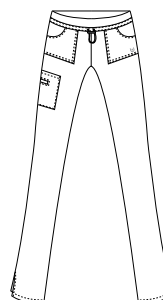
TOP-APPLIED HIP POCKET

C

**C 9314**

## "Momentum" Straight Cargo Pant

Shift style and comfort into high gear with a modern, slim-fit cargo pant. Tunneled bungee drawstring cinch a modern flat elastic waist. Lots of storage with two top-applied hip pockets and cargo patch pocket with coin welt pocket. Straight leg silhouette. Side slits feature contrast mesh facing.



95% polyester/5% spandex

Sizes: XS-2XL [31½" inseam]

PXS-P2X [28½" inseam]

TXS-TXL [33½" inseam]

See color chart on page 19



## A 9042

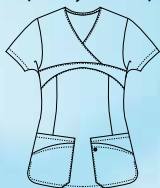
### "Renew" Four Pocket Top

Stay cool with wicking performance fabric and a top pocket with personal electronic device (PED) cord management for your technology needs. Four top-load pockets give you added storage. The 2"x2" rib insets on empire line and arm hole gives additional flexibility, while crossover V-neckline and back princess seam show your curves. New rounded hem with side-slit.

95% polyester/5% spandex (4-way stretch)

Sizes: XS-3XL

Medium length 26 7/8"



## B 9317

### "Drive" Convertible Knit Pant

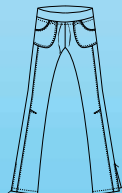
Yoga-inspired convertible knit pant. Adjustable waistband band sits at natural waist while the performance fabric gives you flexibility with wicking. Silver draw cord provides additional stability. Relaxed leg includes a 4 1/2" locking zipper at bottom to easily convert from straight leg to flare. Two rounded front pockets and a small back center pocket with personal electronic device (PED) cord management.

95% polyester/5% spandex (4-way stretch)

XS-3XL (31" inseam)

PXS-P2X (29" inseam)

TXS-TXL (33 1/2" inseam)



## C 9872

### "Empower" P-Tech Warm-up

P-Tech Warm-up is a modern warm-up jacket that combines performance fabric and an innovative personal electronic device (PED) cord management system. Princess seams and a mock neck has two deep pockets plus a PED pocket provide storage while our innovative zipper pull keeps your PED cords in place. Wicking finish to keep you dry on your busiest of days.

100% Polyester (single sided fleece)

Sizes: XS-2XL

Medium length 27"



A



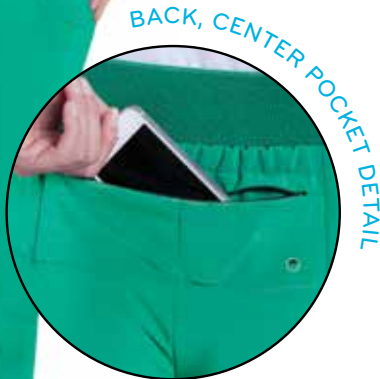
# MEDIA COLLECTION



B



Media cord outlet



BACK, CENTER POCKET DETAIL



FLARE ZIP PER DETAIL

C



**A 9037**

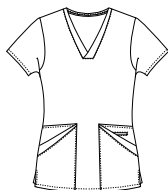
**"Elevate" Crossover Top**

Step it up with style and function with this squared crossover V-neckline top loaded with pockets for all of your everyday essentials. Two double oversized top entry pockets plus a signature mesh welt coin pocket let you carry it all. Back darts add subtle shaping and side slits aid in mobility.

95% polyester/5% spandex

Sizes: XS-2XL

Medium length: 25<sup>7</sup>/<sub>8</sub>"



While supplies last.



**B 9015**

**"Motivate" V-Neck Top**




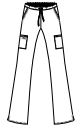




Keep it simple and sporty with this tonal stitched set-in V-neckline with bust darts and tonal stitched arm. Two angled welt pockets plus an additional welt pocket with interior mesh lining. Back waist darts for shaping. Side slits at hem feature interior mesh detail and tonal stitching.

95% polyester/5% spandex

Sizes: XS-5XL

Medium length: 25<sup>7</sup>/<sub>8</sub>"



	9014 "Propel"	9015 "Motivate"	9037 "Elevate"	9312 "Endurance"	9314 "Momentum"	9042 "Renew"	9317 "Drive"	9872 "Empower"
								
	XS-5XL 26 3/4" LENGTH PG.14	XS-5XL 25 3/4" LENGTH PG.18	XS-2XL 25 3/4" LENGTH PG.18	XS-5XL 31 1/2" INSEAM PG.14	XS-2XL 31 1/2" INSEAM PG.15	XS-3XL 26 3/4" LENGTH PG. 16	XS-3XL 31" INSEAM PG. 16	XS-2XL 27" LENGTH PG. 16
African Violet PAVFS				P2, T			P2, T	
Black BKFS			†	P2, T	P2, T		P2, T	
Cotton Candy PCCFS		†	†	P2, T				
Crystal Lagoon CTLFS	†	†		P2, T	P2, T			
Emerald GEFS		†		P2, T		†	P2, T	
Galaxy BGFS	†			P2, T				
Graphite GRFS			†	P2, T	P2, T		P2, T	
Hot Coral OHCFS		†	†	P2, T				
Hunter GHFS				P2, T				
Jazz Berry JZFS				P2, T				
New! Kelly GKFS				P2, T				
Mediterranean MEBFS				P2, T				
Mystic Violet MVFS		†		P2, T †	P2, T			
Navy BNFS			†	P2, T	P2, T		P2, T	
Royal BEFS			†	P2, T			P2, T	
Steel STFS			†	P2, T	P2, T		P2, T	
True Red TRDFS	†	†		P2, T	P2, T			
Ultramarine BUMFS		†	†	P2, T				
White WWFS				P2, T				



#### Moisture Wicking

Wicks moisture away from skin and helps you stay dry and comfortable 4 Way Stretch

† While supplies last.

## To Take Your Measurements

### BUST/CHEST:

After exhaling, measure around your back and over the fullest part of your chest.

### WAIST:

Wrap tape loosely around your waistline where you would wear a belt.

### HIP:

With feet shoulder-width apart, measure around the widest part of your hips.



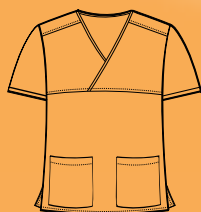
	Bust	Waist	Hip
XXS	30-31	22-23	32-33
XS	32-33	24-25	34-35
S	34-35	26-27	36-37
M	36-37	28-30	38-40
L	38-40	31-33	41-43
XL	41-44	34-37	44-47
2X	45-48	38-41	48-51
3X	51-54	44-47	54-57
4X	53-56	46-49	56-59
5X	57-60	50-53	60-63

Note: Garments will typically measure larger to ensure ease of movement.

urbane<sup>™</sup>  
essentials

# FASHION AND FUNCTION

Vibrant, fashion-forward  
styles and colors.



two pockets

**A 9534**  
**Double Pocket Crossover Top**

An updated Urbane classic. Two deep pockets to keep your hands free and a relaxed fit for ease of movement. Available with contrast piping and in solid colors.

65% polyester/35% cotton

Select colors in 60% cotton/40% polyester\*

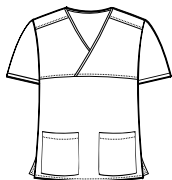
Sizes: XS-3XL

Medium length: 27½"



A





9534

## Double Pocket Crossover Top

Papaya/Harbor Blue* [OPHCP]	True Red/Black [TRBKP]	Strawberry/Lime † [RELMP]	Jazz Berry/Black [JZBKP]	Carnation/Pear* [PAGCP]	Iris/Black [IRBKP]
Wisteria/Pear [WPGCP]	Ceil/Navy [BCBNP]	Peacock/Black* [PBBKP]	Royal/Lime [BELMP]	Patriot/Aqua [BPAQP]	Navy/White [BNWXY]
Navy/Ceil [BNBCP]	Navy/Shamrock [BNSRP]	Grape/Lime [RPLMP]	Galaxy/Primrose [BGPRP]	Caribbean/Aqua [CBAQP]	Mediterranean/Lime [MELMP]
Glacier/Black* [GLBKP]	Scuba/Royal* [SBBEP]	Aqua/Chocolate [AQDCP]	Turquoise/Navy [GTBNP]	Arctic Ice/Chocolate [ASDCP]	Lucky Green/Concord † [LGCCP]
Cocoa/Teal † [COBTP]	Chocolate/Aqua [DCAQP]	Sandstone/Black [SABKP]	Steel/Pearl Pink [STPKP]	Steel/Aqua [STAQP]	Steel/Caribbean [STCBP]
Black/Cherry Blossom [BKPCP]	Black/Primrose [BKPRP]	Black/Spice [BKRSP]	Black/White [BKWXY]	Wine/Caribbean [RWCBP]	Poppy/Iris [PIIRP]
Steel [STP]	Ceil [BCP]	Royal [BEP]	Galaxy [BGP]	Wine [RWP]	White [WWXY]
Black [BKP]	Graphite [GRP]	Navy [BNP]	Hunter [GHP]		

†While supplies last.

\*Select colors in 60% cotton/40% polyester.



# PERFECT FOR PAIRING

## A 9301 Knit Waistband Pant

With nurse feedback in mind, we designed this super comfy yoga-inspired wide knit waistband pant with side tie. Low rise and slim through hips, seat and thighs for a stylish, fitted look. Flare leg with side vents.

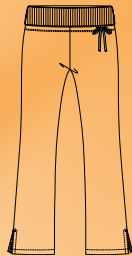
64% polyester/33% cotton/3% ribbed knit spandex

Black (BKP), Navy (BNP), Royal (BEP)

Sizes: XS-2XL [31" inseam]

PXS-P2X [28½" inseam]

TXS-TXL [33" inseam]



SIDE-TIE DETAIL



While supplies last.





## 9502 Relaxed Drawstring Pant

Papaya* [OPCP] R, P	True Red [TRP] R, P, T	White [WWXY] R, P, T	Jazz Berry [JZBP] R, P, T	Primrose† [PRMP] R, P, T	Carnation* [PACP] R, P, T
Cherry Blossom [PCBP] R, P, T	Concord [RCCP] R, P, T	Brandy† [RBCP] R, P, T	Wine [RWP] R, P, T	Wisteria [WPP] R, P, T	Iris* [IRCP] R, P, T
Grape [RPP] R, P	Galaxy [BGP] R, P, T	Patriot [BPP] R, P, T	Navy [BNP] R, P, T	Peacock*† [PBCP] R, P, T	Robins Egg [BREP] R, P, T
Sunshinet [SSP] R, P, T	Royal [BEP] R, P, T	Ceil [BCP] R, P, T	Arctic Ice [ASBP] R, P, T	Caribbean [CBP] R, P, T	Teal [BTP] R, P, T
Mediterranean [MEBP] R, P, T	Riviera† [BRVP] R, P, T	Scuba* [BSBCP] R, P, T	Aqua [AOBP] R, P, T	Turquoise [GTUP] R, P, T	Sandstone [SAP] R, P, T
Olive [GOSP] R, P, T	Hunter [GHP] R, P, T	Lucky Green*† [LGCP] R, P, T	Lime† [LMP] R, P, T	Pear [GPCP] R, P, T	Black [BKP] R, P, T
Cocoa† [COCP] R, P, T	Chocolate [DCP] R, P, T	Silver† [SLSP] R, P, T	Steel [STP] R, P, T	Graphite [GRP] R, P, T	Poppy [PPOP] R, P, T



### B 9502 Relaxed Drawstring Pant

A perennial favorite. Straight leg without side seam for smooth silhouette. Sits comfortably at the natural waist and adjusts easily with full drawstring. Rounded saddle engineered to fit curves while staying relaxed through hips and thighs for all-day comfort.

65% polyester/35% cotton

Sizes: XS–2X (31½" inseam)

PXS–P2X (29" inseam)

TXS–TXL (33½" inseam)

R–Regular, P–Petite, T–Tall †While supplies last.

\*Select colors in XXS–3XL and P3X.

**A 9607**  
**Lab Jacket**

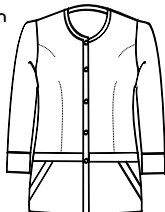
A modern, minimalist design makes this the smartest-looking jacket in the lab. Innovative sleeve design featuring hidden stockinette cuffs to keep sleeves out of the way. High collarless neckline, signature button closure, princess seams, set-in waistband and four lower pockets. Back fitted darts and vent.

65% polyester/35% cotton

Sizes: XS-2XL

White [WWXY]

Medium length: 31 $\frac{1}{8}$ "



**B 3109**  
**Lab Coat**

Timeless tailoring adds sleek appeal to this Urbane Essential. Slim silhouette with hourglass double-stitched waist detail. Zipper with decorative pull tab. Two pockets.

65% polyester/35% cotton

Sizes: XXS-2XL

White [WWXY]

Sizes: XS-3XL

Black [BKP]

Medium length: 29"



A





# TAILORED TO WORK

urbane essentials



B